

# Installation Guide – Bullion on Web (BoW)



**Version 1.0**

## System Requirements for IIBX Trading Application –

Description	Suggested Configuration of IIBX Front end trading terminal
System Configuration	Intel i3 or above configuration
Memory	4 GB RAM minimum
Network cards	1 Ethernet ports
Free Disk space	100 GB atleast
Display Resolution	1024 X 768
OS	Windows 10 and above
Software	DotNet framework 4.0 or above

## IP and Ports to access IIBX Trading application

Member coming through firewall need to open following IP & port for accessing IIBX Trading application exe application.

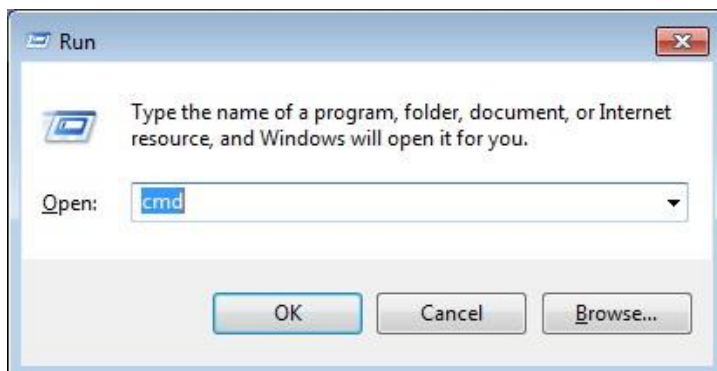
Destination IP	Ports	Direction
IP Address : 159.60.131.197 Must resolve to <a href="http://bow.iibx.co.in">bow.iibx.co.in</a>	Login communication :443 (SSL) Interactive Communication :9091 (TCP) Broadcast Communication: 9092 (TCP)	Uni

Note: IIBX Trading application works on TCP protocol. Members or Users can connect application exe via proxy. (Proxy details can be updated in Connection settings tab).In addition, TCP port 9091 and 9092 to be enabled through Proxy.

## Manual Network Service Availability Check

To manually check the connectivity use telnet

Go to Start -> Run or press windows key + r and enter cmd



In the command prompt type

Telnet (Service host ip) (port)

**Example:**

**Telnet bow.iibx.co.in 443 (To Check Internet Connectivity)**

```
C:\>bow.iibx.co.in 443_
```

If available, it will give a blank screen with a blinking browser close the window by pressing on the X button



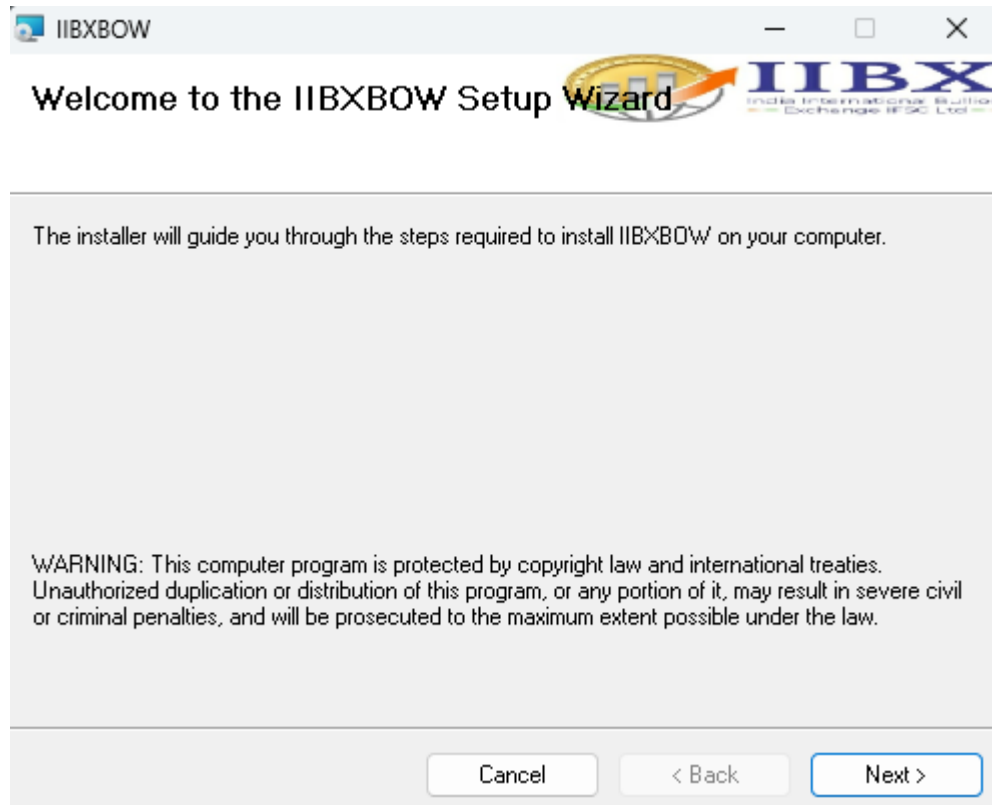
Else it would give an error message saying the connection cannot be established. If you receive such an error kindly request the Network Administrator to open the Ports on the host IPs given.

## **Bullion on Web (BoW) Installation**

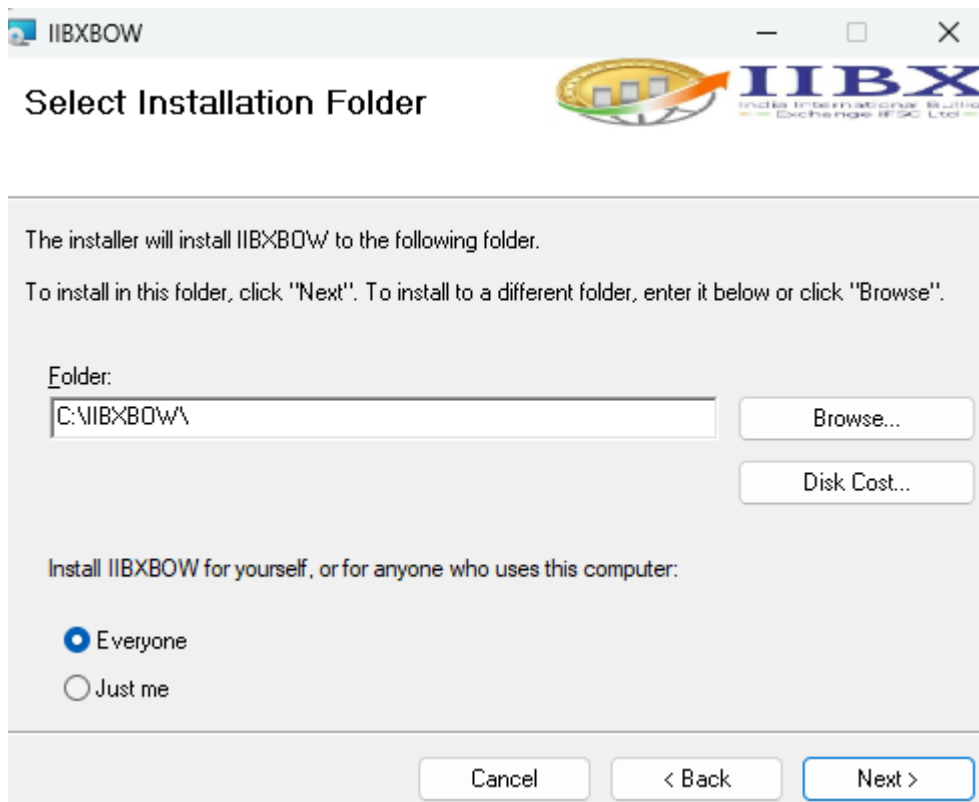
Download the installer file - [msi file](#) and run the installer.

[https://www.iibx.co.in/download/IIBX\\_Internet.msi](https://www.iibx.co.in/download/IIBX_Internet.msi)

### **Step 1 -**



## Step 2 -



The installer will install IIBXBOW to the following folder.

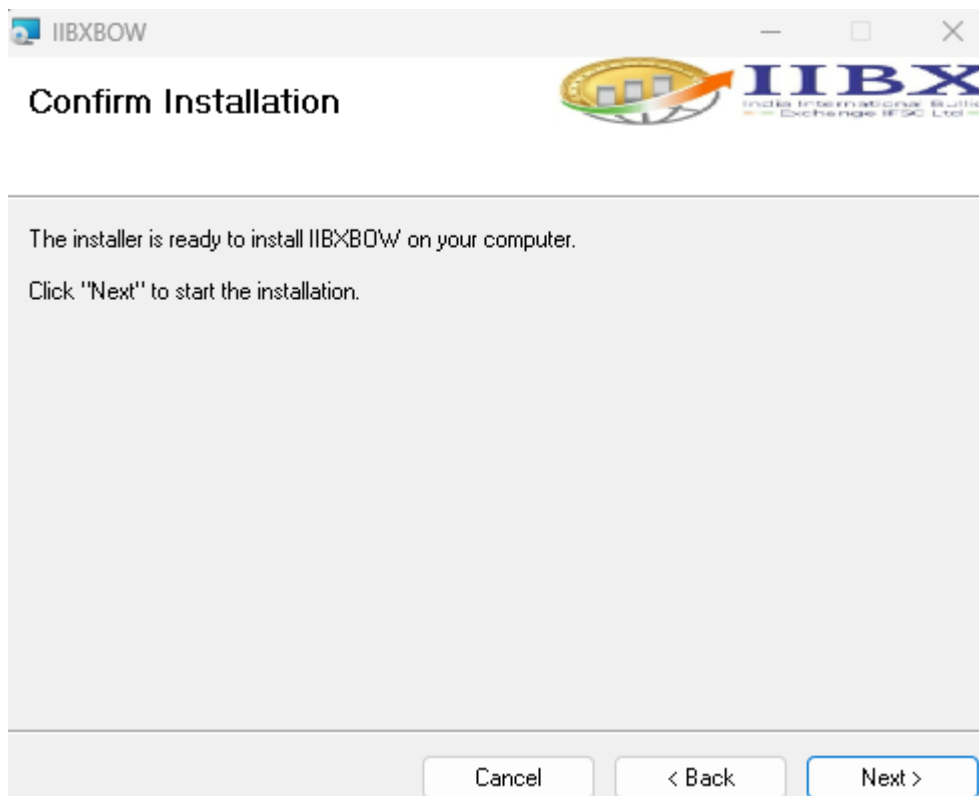
To install in this folder, click "Next". To install to a different folder, enter it below or click "Browse".

Folder:

Install IIBXBOW for yourself, or for anyone who uses this computer:

Everyone  
 Just me

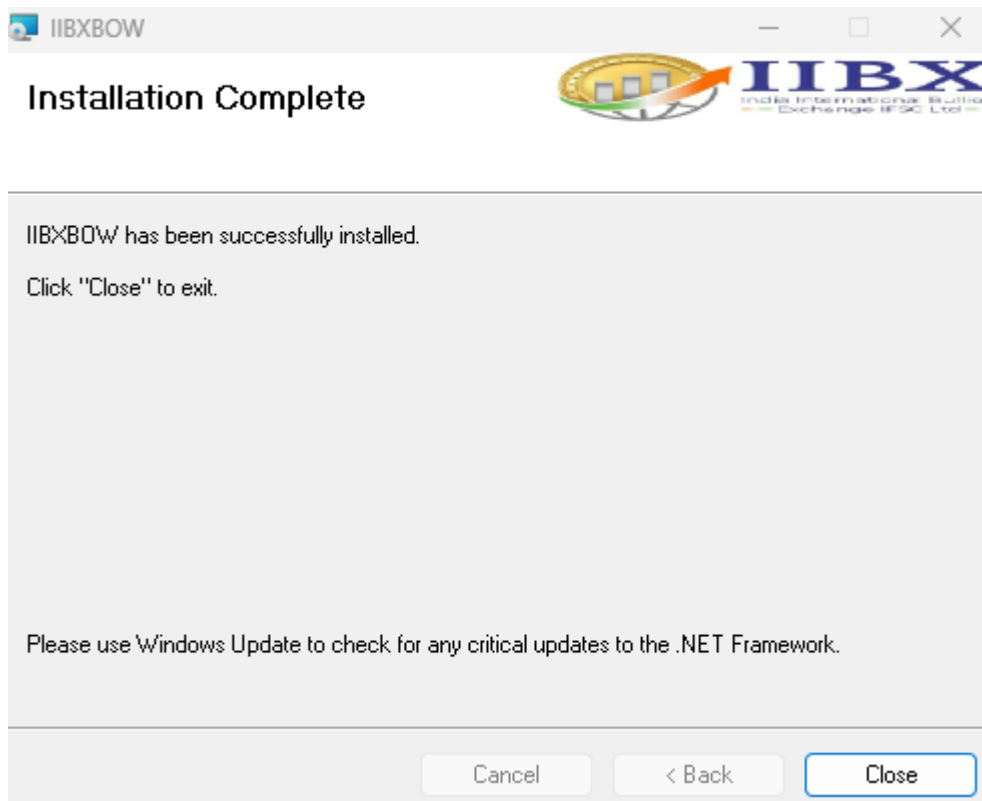
## Step 3 -



The installer is ready to install IIBXBOW on your computer.

Click "Next" to start the installation.

#### **Step 4 -**



Once installation is completed shortcut key of BOW application will be created on the desktop.

Double click or right click and start the application.

